

HOW TO: Print Attachments

MIE TRAK SETTINGS

To print documents in MIE Trak you must make sure the settings in the PRINTDOC.TXT file are ok. You can modify this file by going to the command box and typing the following and then executing.

MODIFY COMMAND PRINTDOC.TXT

COMPILE PRINTDOCT.TXT

PRINT PDF FILES

Printing PDF files requires adobe acrobat reader. MIE Trak uses the system file associations to print these documents so the following code in the printdoc.txt is required.

```
CASE THEEXTENSION='PDF'  
  
    declare integer ShellExecute in shell32.dll long hwnd, string  
cOperation, string cFile, string cParam, string cDir, integer nShow  
    shellexecute(0, "print", ALLTRIM( THEFILENAME ), "", fullpath(""), 0)
```

PRINT DXF / DWG FILES

There is a program that you can download that will allow you to print solid edge files and DXF, DWG files.

STEP 1

Goto the website shown below, register, download and install the application.

<https://www.plm.automation.siemens.com/forms/solidEdgeViewer.shtml>

STEP 2

You need to make sure a 'print' registered action exists for these types of files. The only action that is setup by default is the 'open' action. You can click on the following links to describe how to add the print action.

<http://www.annoyances.org/exec/show/article02-500>

Edit File Types in Windows Vista

"File Type" associations are the links between your documents and the applications that create them. For instance, when you double-click a Microsoft Word Document on your desktop, Windows knows to start Word and instruct it to open the document because of the Microsoft Word Document file type. Likewise, when you click a website link in an email message, Windows knows which browser to open (e.g., Firefox, Internet Explorer) because of the HTTP Protocol file type.

The **Folder Options** window in Windows Vista is missing the **File Types** tab found in earlier versions of Windows. So how do you edit file type associations in Windows Vista?

There are three ways:

Method #1 (on the fly):

1. Right-click a file of the type you want to change, and select **Properties**.
2. In the **General** tab, click the **Change** button.
3. Choose a program from the list, or click **Browse** to select an .EXE file on your hard disk.

Method #2 (view a list of file types):

1. Open **Control Panel**.
2. In *Control Panel Home*, click **Programs**, and then click **Make a file type always open in a specific program**.

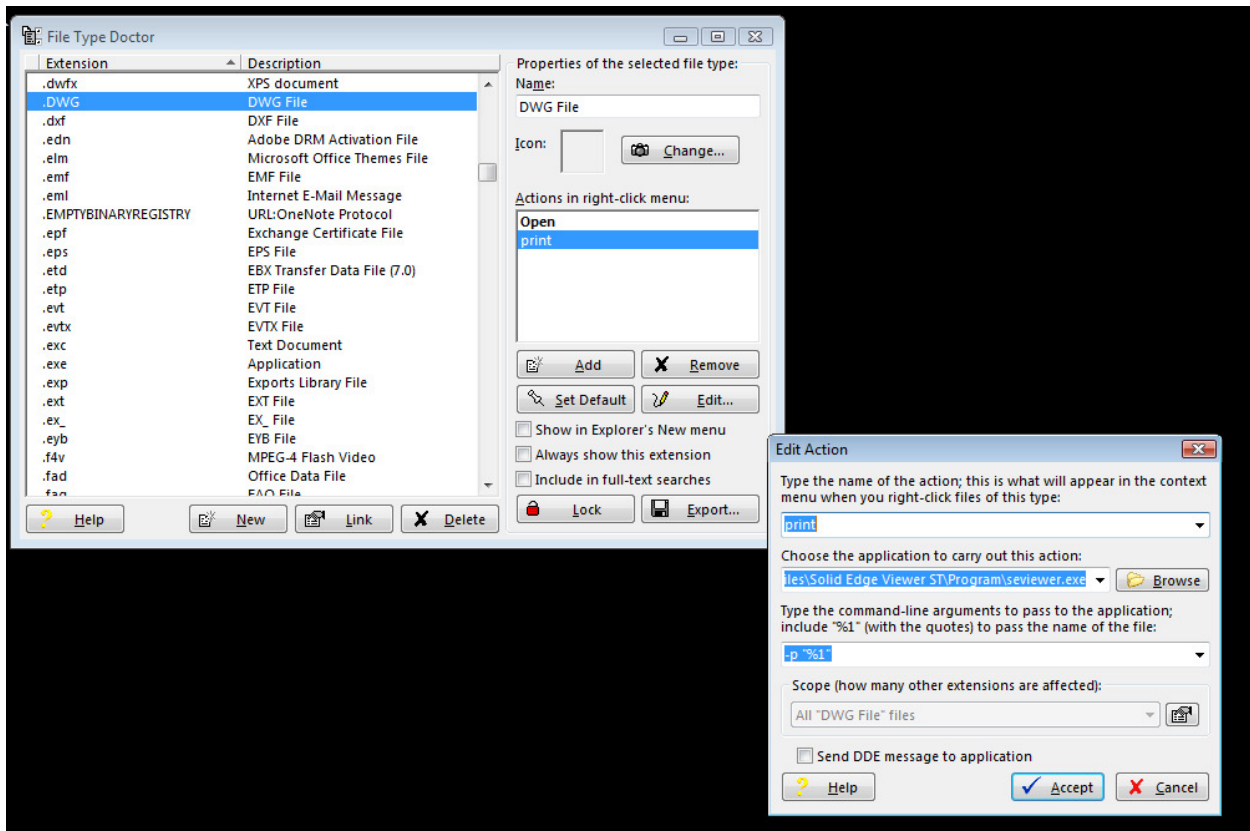
Or, in the *Classic View*, open **Default Programs** and then click **Associate a file type or protocol with a program**.

3. Highlight a file type in the list and click **Change Program**.

Unfortunately, neither method in Vista allows you to choose anything but the default programs, such as the programs listed in your files' context menus. If you want complete control over your file types, use this tool:

Method #3 (File Type Doctor):

1. Download and install [Creative Element Power Tools](http://www.creativeelement.com/powertools/). The link is <http://www.creativeelement.com/powertools/>
2. Open the Creative Element Power Tools Control Panel.
3. Turn on the **Edit file type associations** option, and click **Accept**.
4. Right-click a file of the type you want to change, and select **Edit File Type** to show this window:
5. Modify the extension with the print settings shown below in the screen shot.



STEP 3 ACTUAL CODE

The code is shown below which enables you to print these type of files.

```
CASE THEEXTENSION='DXF' or THEEXTENSION='DWG' or THEEXTENSION='DFT'
```

```
    declare integer ShellExecute in shell32.dll long hwnd, string
    cOperation, string cFile, string cParam, string cDir, integer nShow
    shellexecute(0, "print", ALLTRIM( THEFILENAME ), "", fullpath(""), 0)
```