

Subassemblies vs. Product Attachments

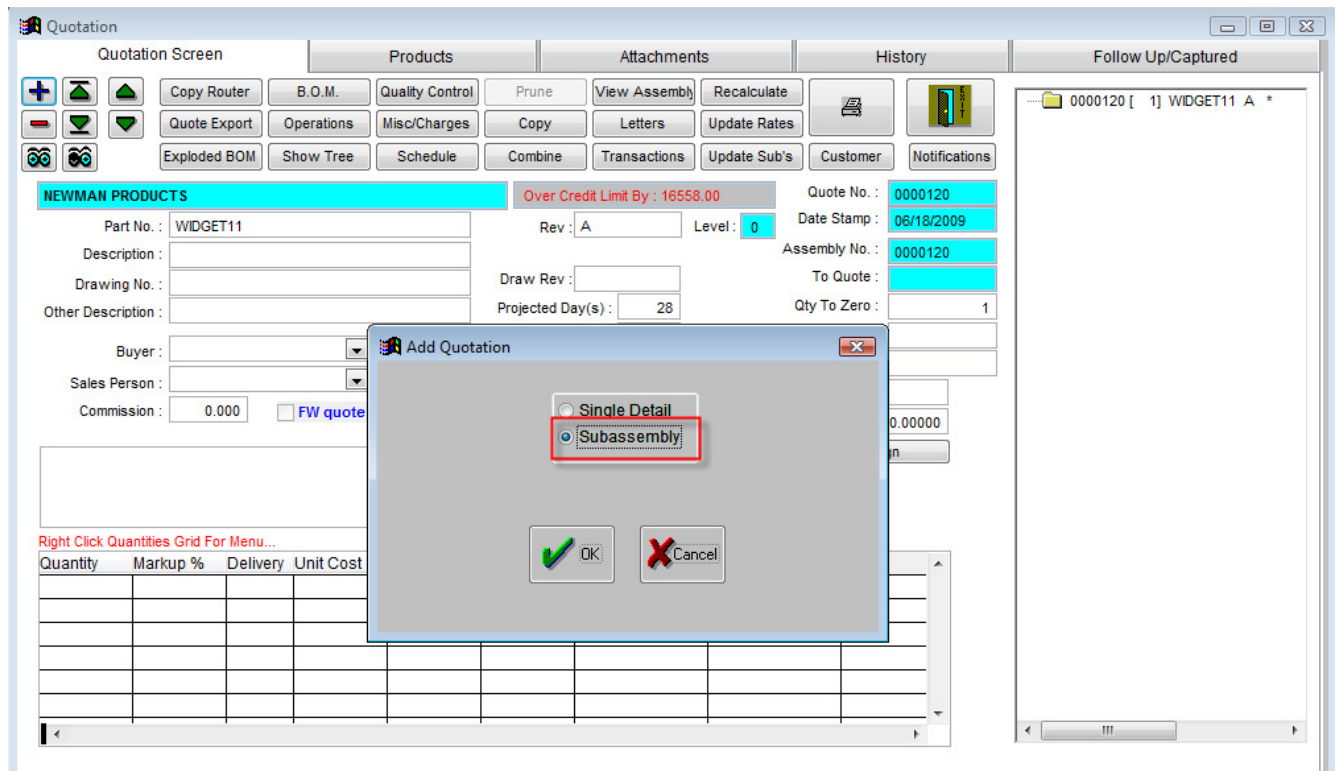
SUBASSEMBLIES:

There are no advantages in using the subassembly option. You know you are using subassemblies if there is a folder next to the part number in the tree on the right hand side of the screen.

Some of the downfalls include:

- Won't allow the use of the same part number in multiple assemblies.
- Won't allow the use of the same part number in the same assembly tree.

To create a subassembly, click on the + sign and select Subassembly. This adds a subassembly quote directly attached to the quote you are viewing.



The system will create a new quote under the top level. Enter the part number, rev number, and the description.

DO NOT USE THIS METHOD unless requested to do so.

PRODUCT ATTACHMENTS:

Product attachment is more efficient and easier way to build assembly trees.

Some of the advantages includes:

- Will allow to use the same part number in multiple assemblies
- Will allow to use the same part number in the same assembly tree
- Will allow to create Work Order for inventory

To add a product attachment, click on the + sign then enter the quote number. You must have a quote already created before attaching as a product.

