


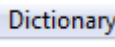
Using the System Message and Shutdown options in MIE Trak

1. Go into the VFTW dir. .

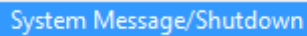
2. Once in the VFTW dir locate FABD application  and double click.



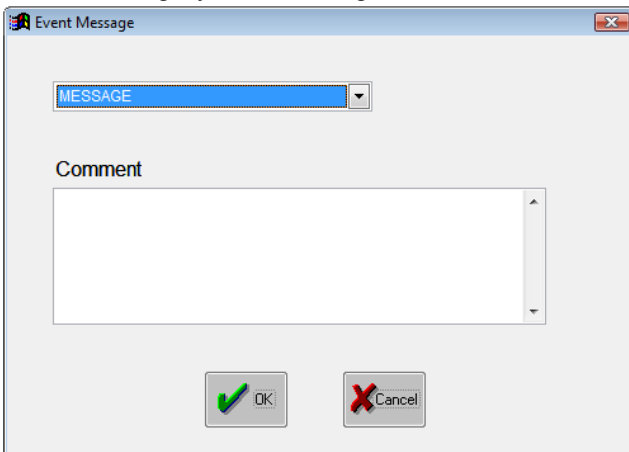
3. Log on screen will appear enter your admin password and click OK.

4. Once logged in, go to Dictionary  and click on it

5. Drop down menu will appear, select System Message/ Shutdown option




6. After selecting System Message/Shutdown Event message board will appear



7. To enter a message select Message from the drop down menu and enter a comment in the Comment.

8. To Log off MIETrak user, select SHUTDOWN from the dropdown and click



OK after about 15 seconds user will be logged off

9. To cancel the shutdown click go back into Event Message and click on the Cancel button.