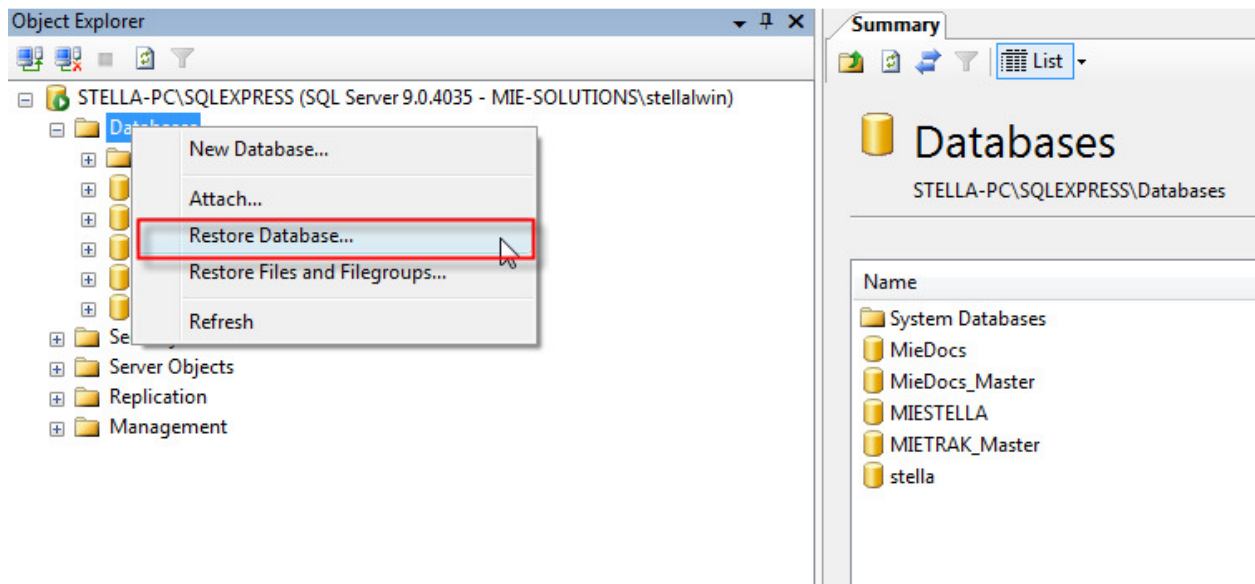


MIE Maintenance: How To Setup the Sample Database

Download the sample database (022_MIETrakData.zip) from MIE Maintenance page. Extract the zip file and save it on your local drive.

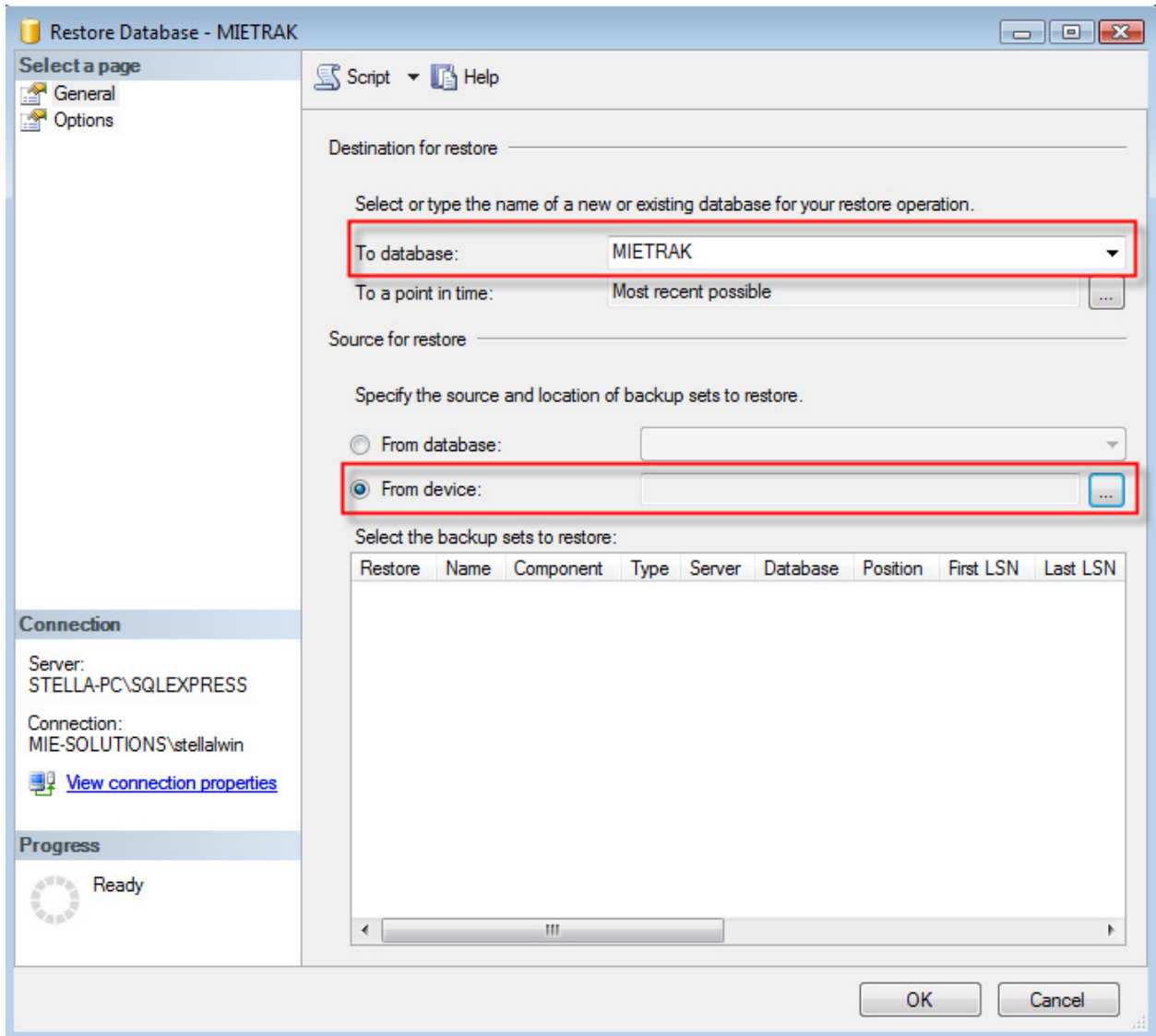
Open up Microsoft SQL Server

Right click on Database and select Restore Database...

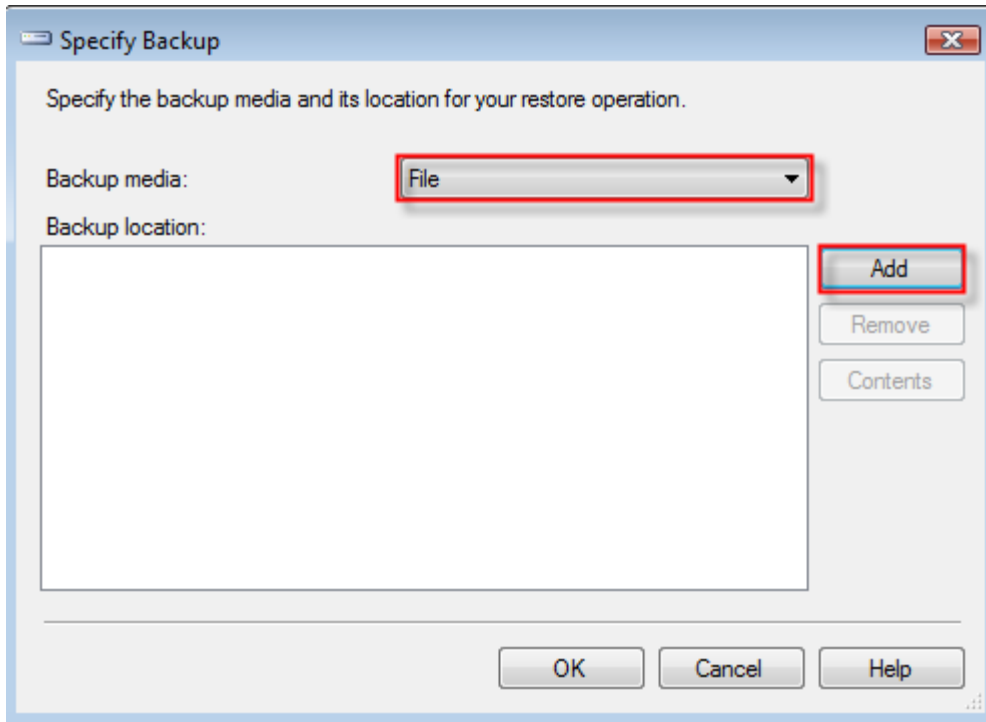


In the following window, type in the name of the database you want to create.

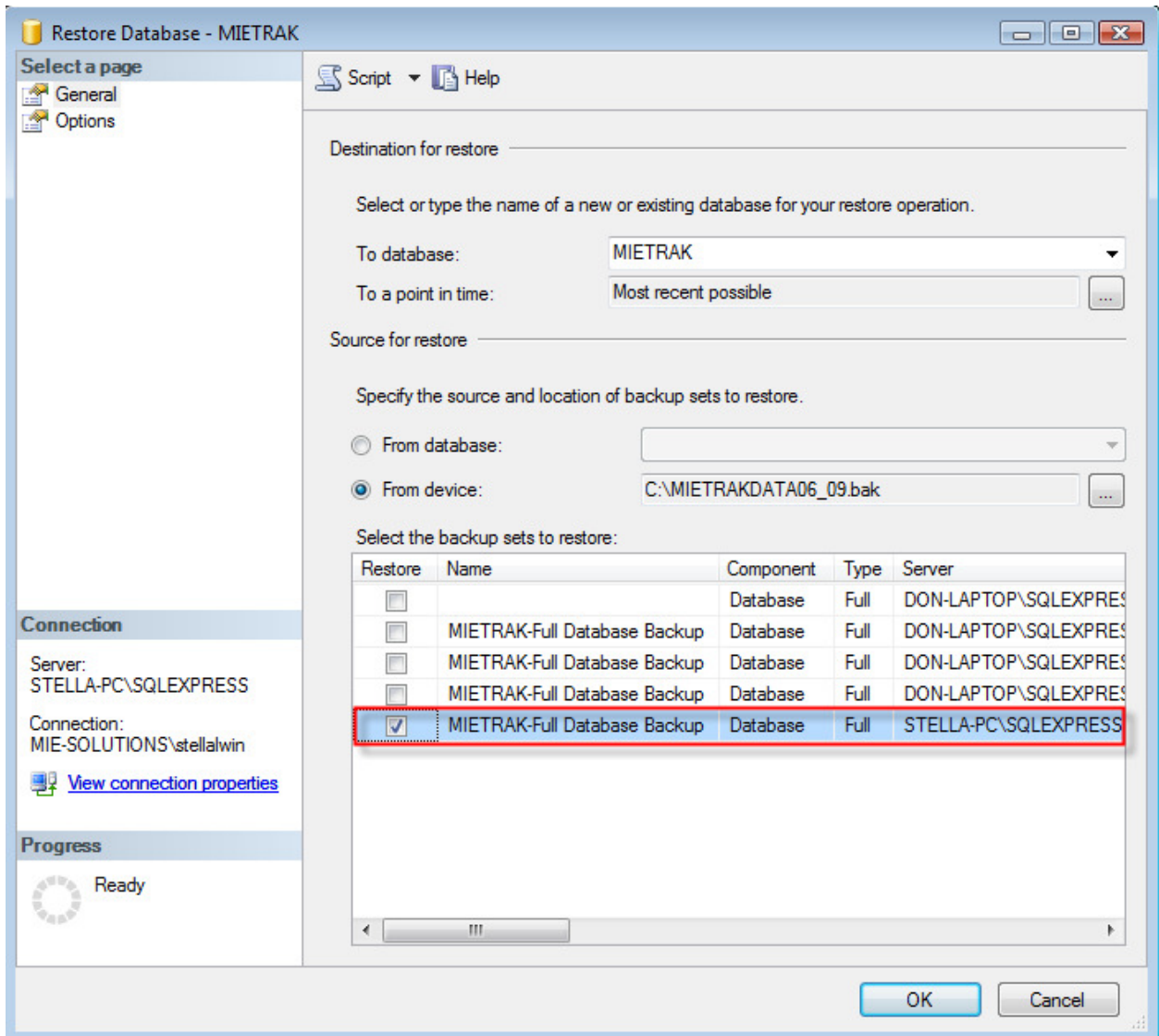
Then, select From device and click on the dotted button.



Make sure Backup media is selected File. Then, click on the Add button to browse the sample database from the local drive.



The system will give you a list of backup sets you can choose from. Select the latest one and click Ok.



The following window concludes the restoring process.

